

Inquiry/order form special tools – routing**Customer details:** Customer number:
(if known)☐ Inquiry
☐ Order

Delivery date: (not binding)

CW

Company:

Street:

Date:

Post code/place:

Inquiry/order no.:

Country:

Tool ID: (if known)

Phone/fax:

Quantity:

Contact person:

Email:

Signature:

Workpiece material:

Solid wood Type:

Wood-derived material Type:

Other Type:

Direction of machining for solid wood or veneered workpieces:

- ☐
- along grain
-
- ☐
- across grain

Type of coating:

Additional information:

Machine:

Manufacturer:

Range of RPM: min⁻¹

Adaptor

(e. g. SK 30, HSK-F 63 etc.):

Tool:

Tool type (see selection pages):

Dimensions:

Diameter: mm

Cutting width: mm

Shank diameter: mm

No. of teeth:

Cutting material:

- ☐
- HS
-
- ☐
- HW
-
- ☐
- ST
-
- ☐
- DP

Direction of rotation:

- ☐
- left hand
-
- ☐
- right hand

Type of feed:

- ☐
- Mech. feed
-
- ☐
- Manual feed

State profile with sketch or drawing:

- ☐
- Cutting on periphery only
-
- ☐
- Cutting in end grain (ramp plunging possible)
-
- ☐
- for plunging in z-axis

Arrangement of cutting edges:

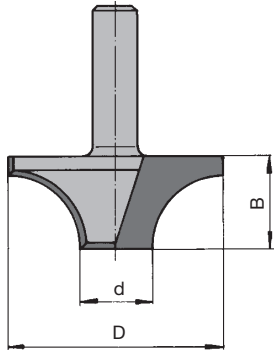
- ☐
- with shear angle on one side
-
- ☐
- with alternate shear angle

☐ Please tick the appropriate box

Inquiry/order form special tools – routing

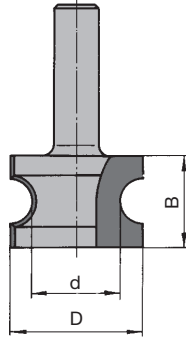
Examples for profile groups 1 and 2:

WO 521-1
open profile



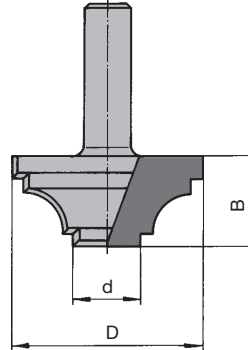
Profile group 1:
cutting on periphery
with bottom knife for
cutting in end grain

WO 522-1
closed profile



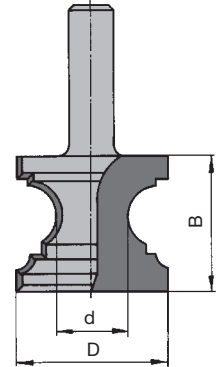
Profile group 1:
cutting on periphery

WO 521-2
open profile



Profile group 2:
cutting on periphery
with bottom knife for
cutting in end grain

WO 522-2
closed profile



Profile group 2:
cutting on periphery
with bottom knife for
cutting in end grain

Sketch for application plan, profile drawing, special motor spindle etc.

Enter on sketch which side of workpiece to table i. e. face side on top/bottom

